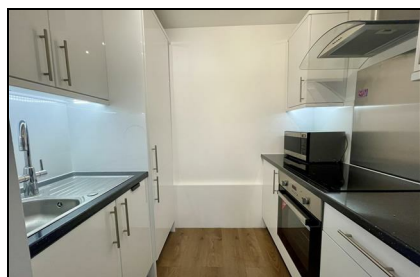


Homespire House
Knotts Lane
Canterbury
CT1 2AB

£800 Per Calendar Month

Finn's
82 Castle Street
Canterbury
CT1 2QD
t: 01227 452111
e: canterbury@finns.co.uk
www.finns.co.uk



A recently refurbished bright and airy one bedroom retirement flat at Homespire House in the centre of Canterbury. The flat is situated on the first floor with lift access. The building has a residents lounge which offers organised activities, guest accommodation, laundry facilities and communal gardens. The building is managed by staff from Monday – Friday and has a careline alarm service.

Homespire House is situated in the heart of Canterbury City Centre within ten minutes' walk of Canterbury West mainline railway station and within easy walking distance of all the City Centre amenities. One small pet may be considered. Qualifying age 60 and over (second occupier must be 55 or over). The property can be let furnished or part furnished for an additional amount per calendar month. Tenant is responsible for Council Tax and Electricity. Wi-Fi and Water is included with the rent. One pet may be considered.

- A one bedroom newly refurbished retirement property in central Canterbury
- Main resident must be 60 or over
- A second occupier must be 55 or over
- Available £1000 pcm furnished or £900 pcm unfurnished
- Council Tax Band B
- Wi-fi and water included within rent
- One small pet considered
- Available 29 July 2025
- EPC B
- Deposit £1150



Energy Efficiency Rating

	Current	Potential
Very energy efficient - lower running costs		
(92 plus) A		
(81-91) B	84	88
(69-80) C		
(55-68) D		
(39-54) E		
(21-38) F		
(1-20) G		
Not energy efficient - higher running costs		
England & Wales	EU Directive 2002/91/EC	



Viewing: By appointment through Finn's, Canterbury
Telephone: 01227 452111

Council Tax: B
Date: These particulars were prepared on: 9th September 2025

Agent's Note: Wherever appliances or services, fixtures or fittings have been mentioned in these particulars they have not been tested by us. Measurements should not be relied upon. Unless specifically referred to above all fitted carpets, curtains, fixtures and fittings and garden outbuildings and ornaments are excluded from the sale. None of the statements in these particulars are to be relied upon as statements or representatives of fact. Photographs are for guidance only and do not imply items shown are included in the sale - some aspects may have changed since they were taken. No person in the employment of Finn's has authority to give any representation or warranty in relation to this property.

FINN'S CANTERBURY
82 Castle Street
Canterbury
Kent CT1 2QD
Lettings: 01227 452111

FINN'S SANDWICH
2 Market Street
Sandwich
Kent CT13 9DA
Lettings: 01304 614471

FINN'S ST NICHOLAS AT WADE
The Packhouse
Wantsum Way
St Nicholas at Wade
Kent CT7 0NE
01843 848320

